

# PLAT OF WINGED FOOT COTTAGES

BEING A TRACT OF LAND LYING IN SECTION 31, TOWNSHIP  
 38 SOUTH, RANGE 42 EAST MARTIN COUNTY, FLORIDA

I, Louise v. Isaacs, Clerk of the Circuit Court of Martin County,  
 Florida, hereby certify that this plat was filed for record in Plat  
 Book 9, Page 92, Martin County, Florida, public records, this  
 day of \_\_\_\_\_, 1985.

LOUISE V. ISAACS, CLERK  
 CIRCUIT COURT  
 MARTIN COUNTY, FLORIDA

BY: \_\_\_\_\_  
 Deputy Clerk

File No.

SHEET 2 OF 3 SHEETS

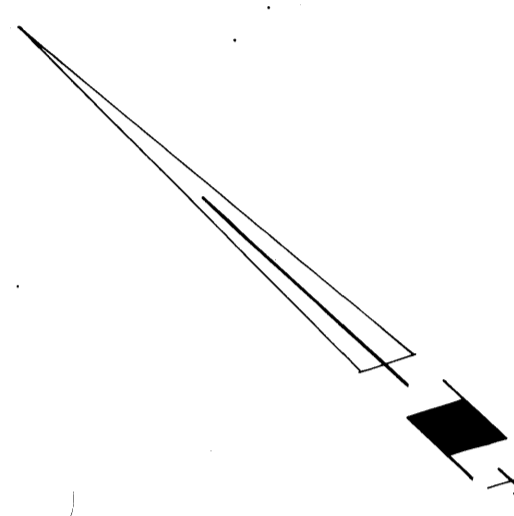
**Hutcheon Engineers**  
 CIVIL ENGINEERS & SURVEYORS

WEST PALM BEACH

BELLE GLADE

STUART

OCTOBER, 1984



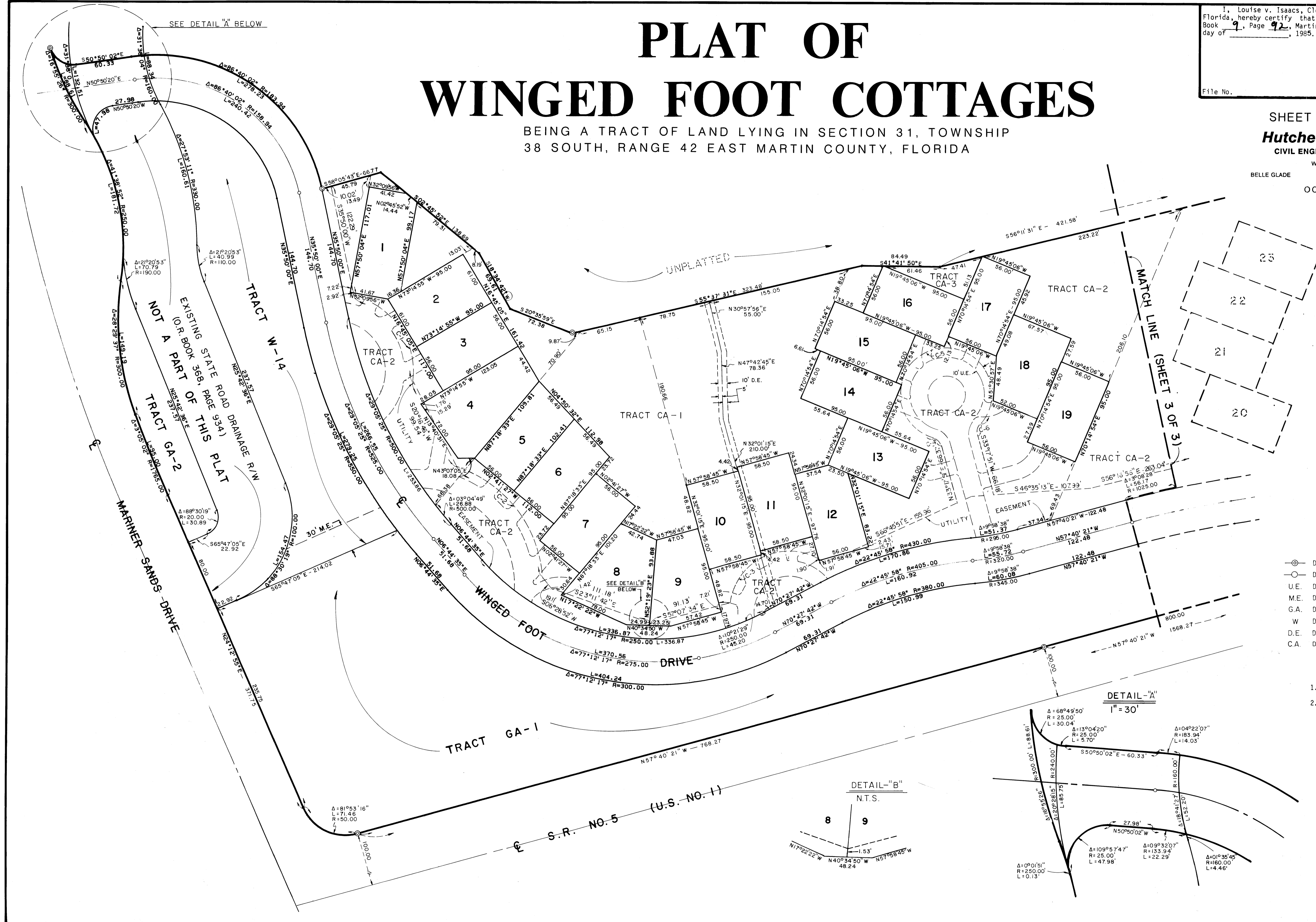
1" = 50'  
 SCALE IN FEET  
 0 25 50 100

**LEGEND**

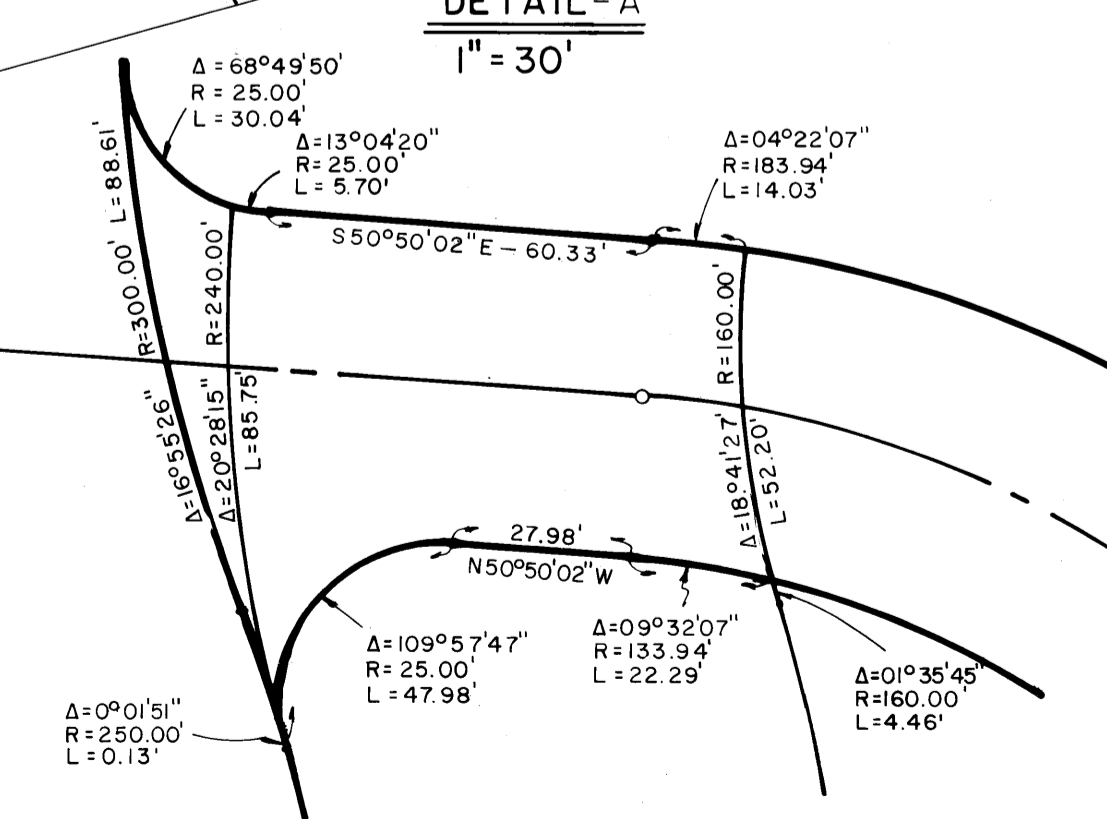
- ⊙ Denotes Permanent Reference Monument (P.R.M.)
- Denotes Permanent Control Point (P.C.P.)
- U.E. Denotes Utility Easement
- M.E. Denotes Maintenance Easement
- G.A. Denotes Green Area
- W Denotes Water Tract
- D.E. Denotes Drainage Easement
- C.A. Denotes Common Area

**NOTES**

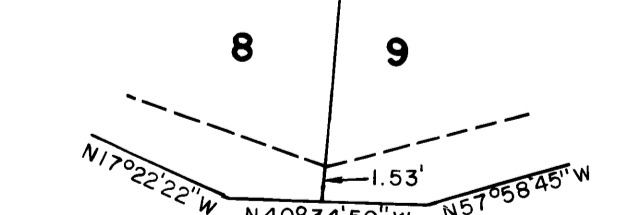
- 1.) All return radii 25'
- 2.) Bearings shown hereon are referenced to MARINER SANDS PLAT NO. 1 as recorded in Plat Book 6, Page 47, public records of Martin County, Florida.



**DETAIL-"A"**  
 1" = 30'



**DETAIL-"B"**  
 N.T.S.



SEE DETAIL "A" BELOW

UNPLATTED

MATCH LINE (SHEET 3 OF 3)

EXISTING STATE ROAD DRAINAGE R/W  
 NOT A PART OF THIS PLAT

MARINER SANDS DRIVE

TRACT GA-1

TRACT CA-1

TRACT CA-2

S.R. NO. 5 (U.S. NO. 1)